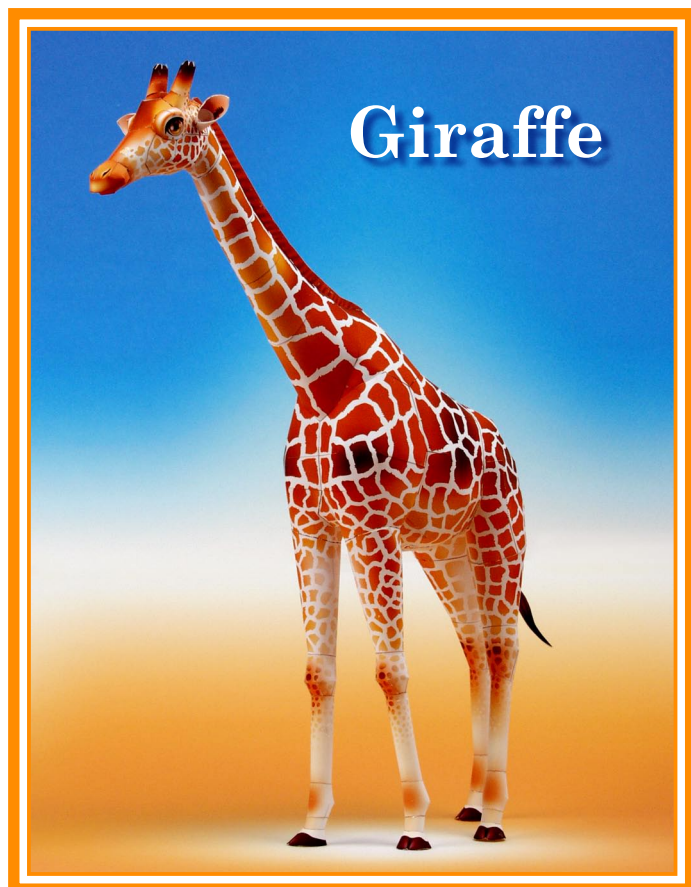


CREATIVE PARK

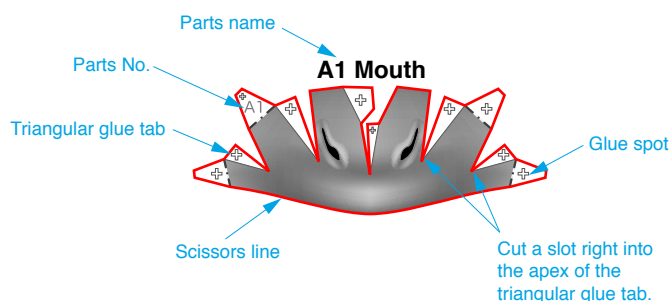
<http://www.canon.com/c-park/>



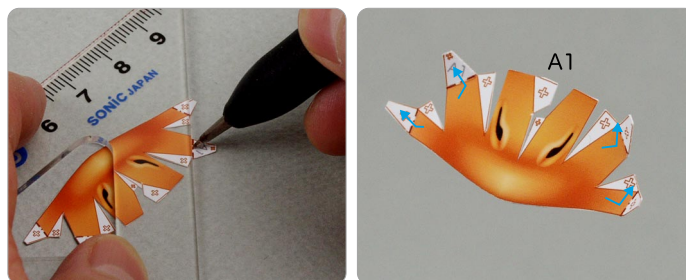
A Assemble the head

Use pattern: Page2.

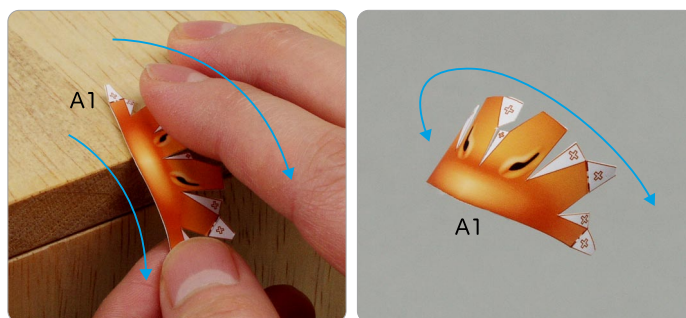
- ① Cut out A1 by cutting along the lines.
- ★ Cut along the line marked —.



- ② Make a valley fold on A1.
- ★ Trace along the valley fold line with a stencil pen, scoring it to make it easier to fold.



- ③ The parts will be easier to assemble if curled.
- ★ Using the photo as a guide, move your fingers in the direction of the arrow, adjusting the pressure to curl the paper.



Tools	Notation Key
Scissors	— Scissors line
Paste, or woodwork glue Mountain fold
Stencil pen, or bodkin	- - - - - Valley fold
Ruler	⊕ Glue spot
Pencil	⊙ Glue reverse side
	A1, B1 Parts No.

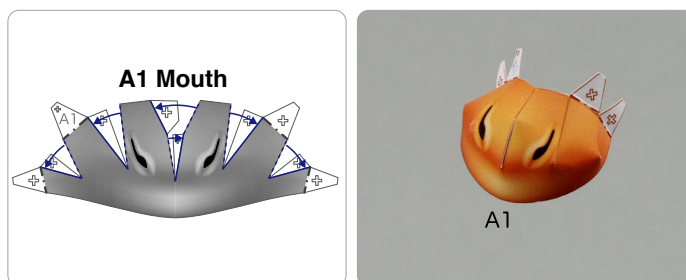
◆ The Assembly instructions are divided into four blocks: A (head), B (neck , shoulder), and C (legs , body). Follow the instructions for each block to assemble your giraffe.

◆★ marks a basic assembly technique that remains the same regardless of the part. Instructions are printed only for the first instance.

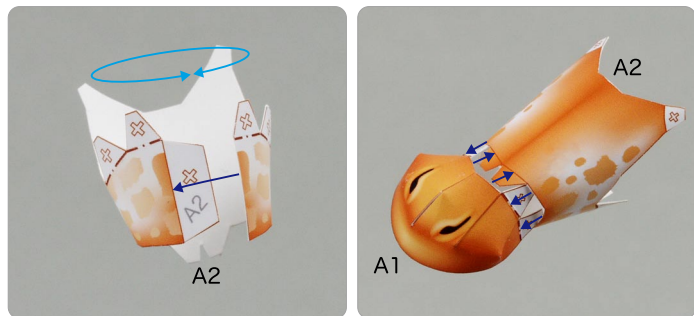
<Caution>

- ✘ Keep scissors and glue away from small children.
- ✘ Be careful not to cut your fingers when using scissors.

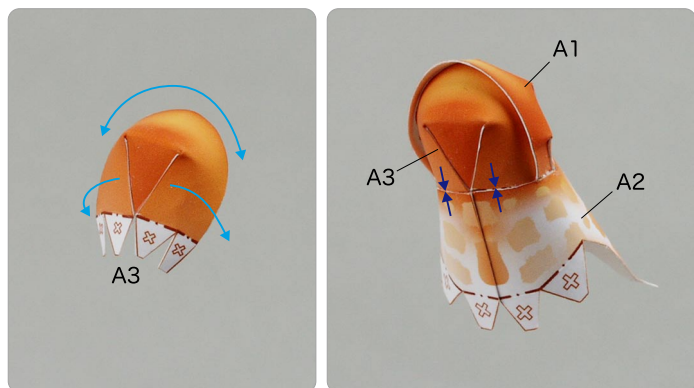
- ④ Add a slight curl to A1 when attaching it.
- ★ Attach the triangular glue tabs so that the front side becomes convex.
- ★ Using the photo as a guide, attach in the direction of the arrow.



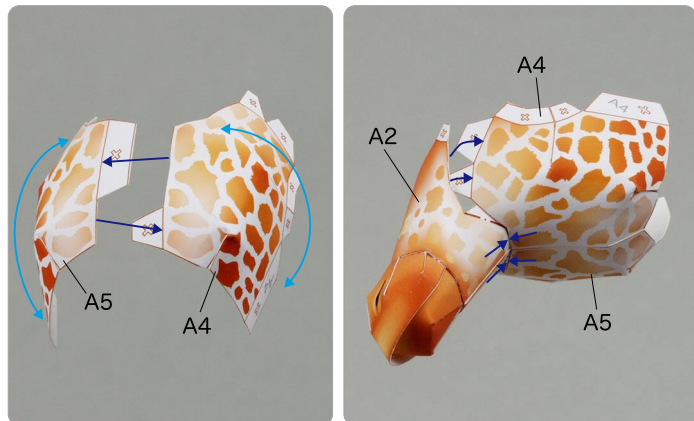
⑤ Assemble A2 , and attach it to the A1.



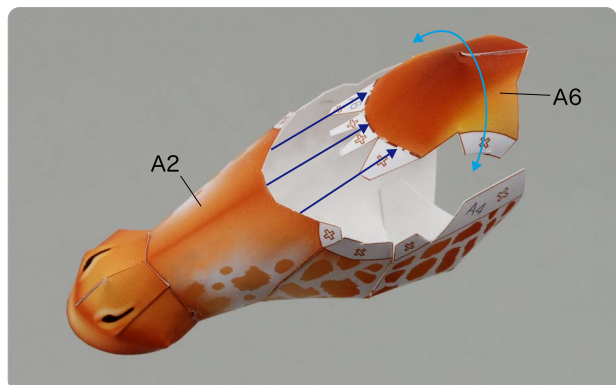
⑥ Assemble A3 , and attach it to the A2.



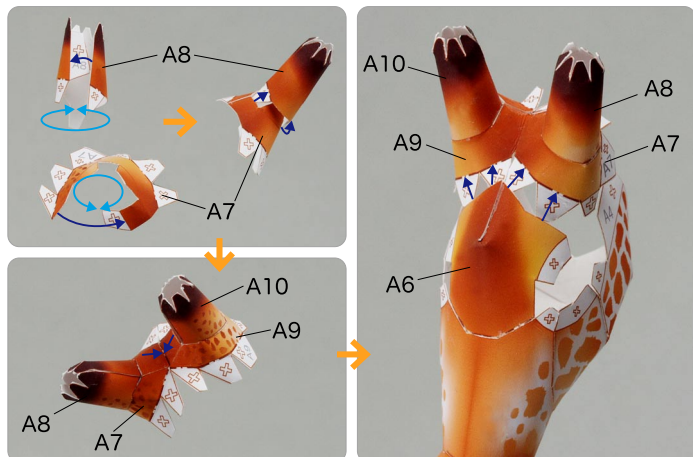
⑦ Attach A4 and A5 together, and attach A2.



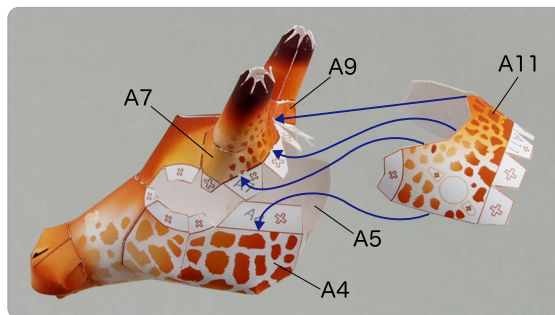
⑧ Assemble A6 to the A2.



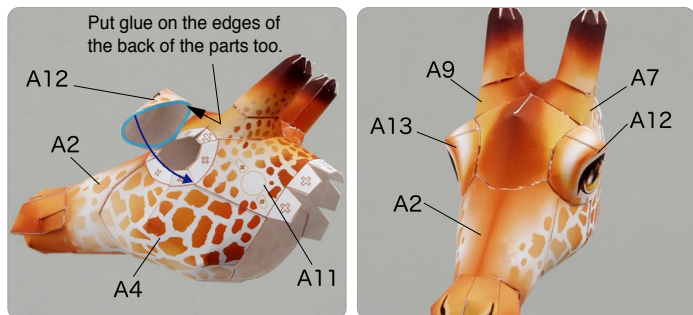
⑨ Assemble A7 and A8, and A9 and A10, and attach them to A6.



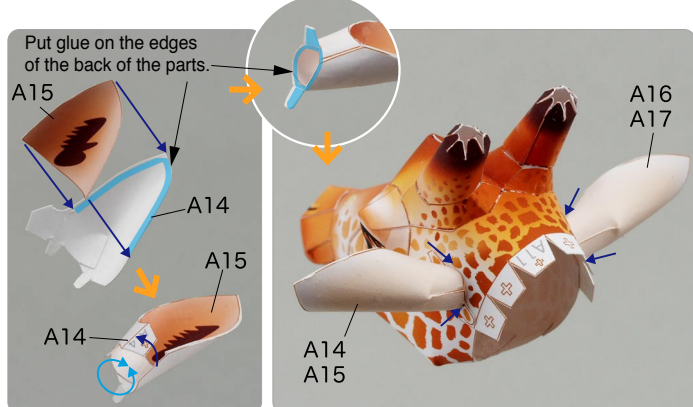
⑩ Assemble A11 to the head.



⑪ Attach A12 and A13 to A9.



⑫ Assemble A14 and A15, and A16 and A17, attach them to A11 and the head is complete.



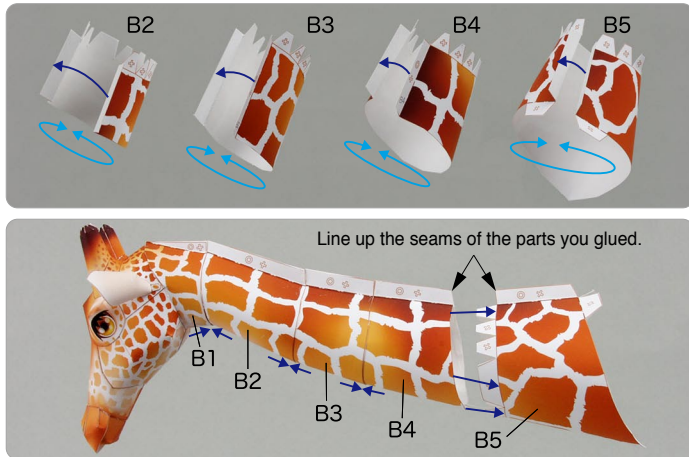
B Assemble the neck and shoulder

Use pattern: Page3 to Page4.

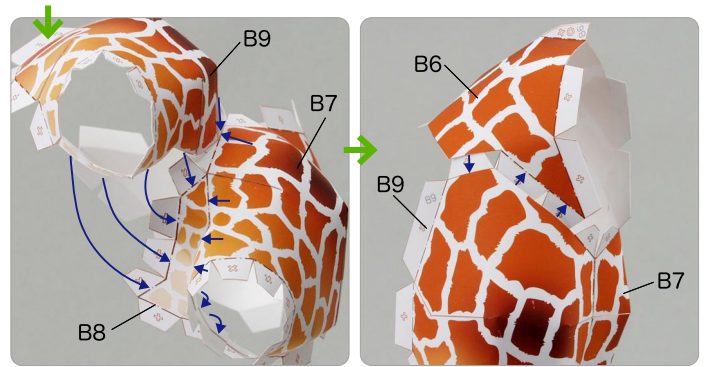
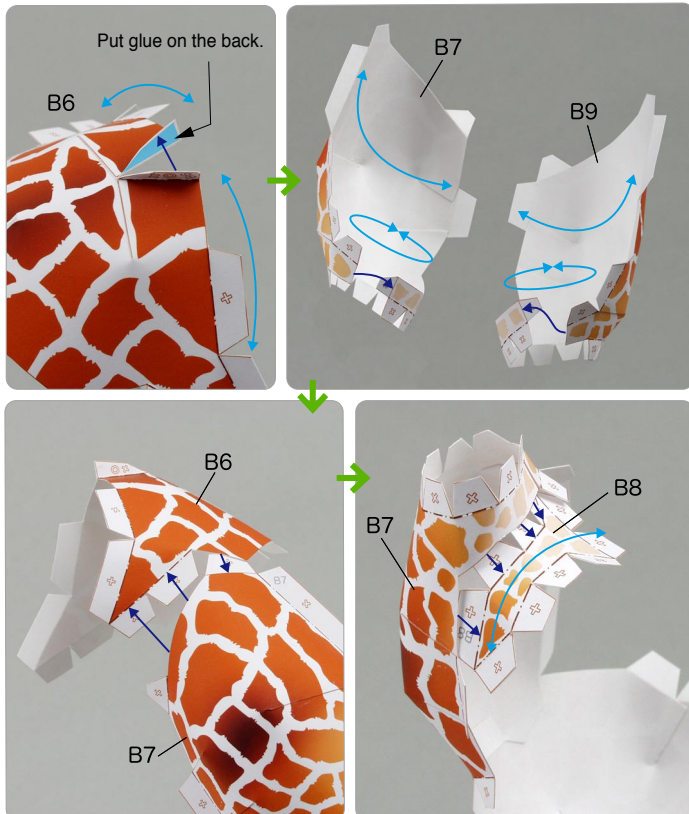
① Assemble B1, and attach it to the head.



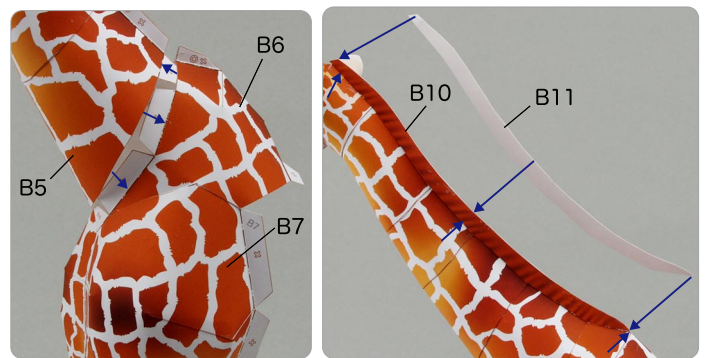
② Assemble parts B2 to B5, and attach them to B1 in order.



③ Assemble parts B6 to B9, and attach them in order.



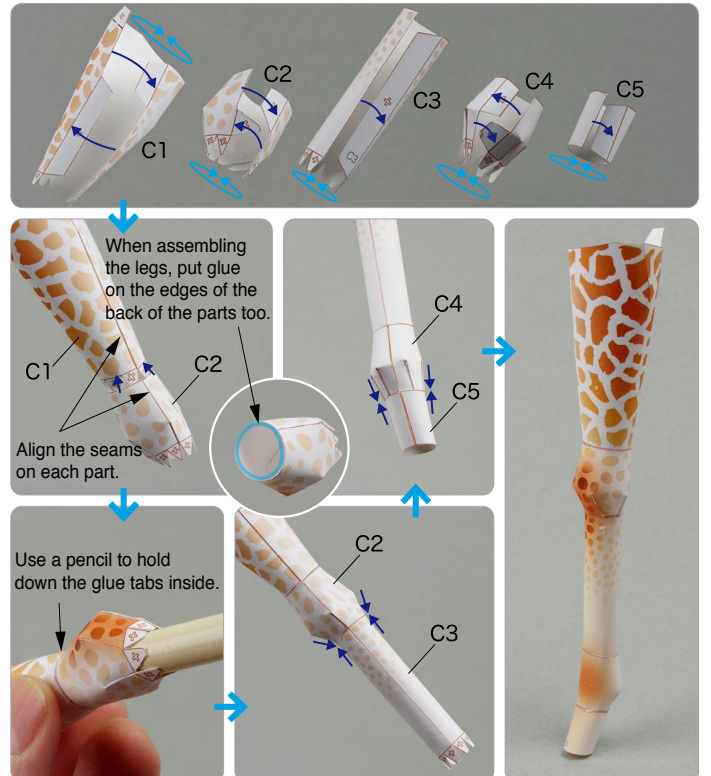
④ Attach the neck and shoulders to each other, attach B10 and B11 to the neck, and the neck and shoulders are complete.



C Assemble the leg and body

Use pattern: Page5 / Page8.

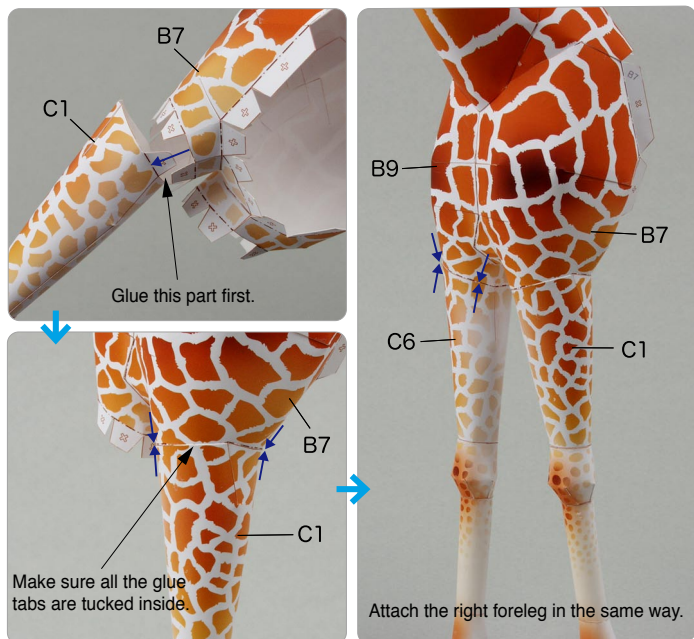
① Assemble C1, C2, C3, C4 and C5.



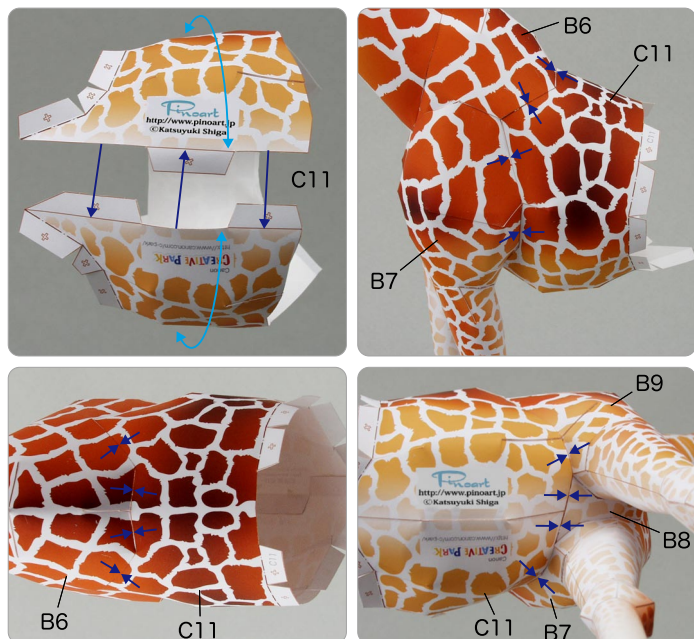
② Assemble parts C6 to C10 in the same way.



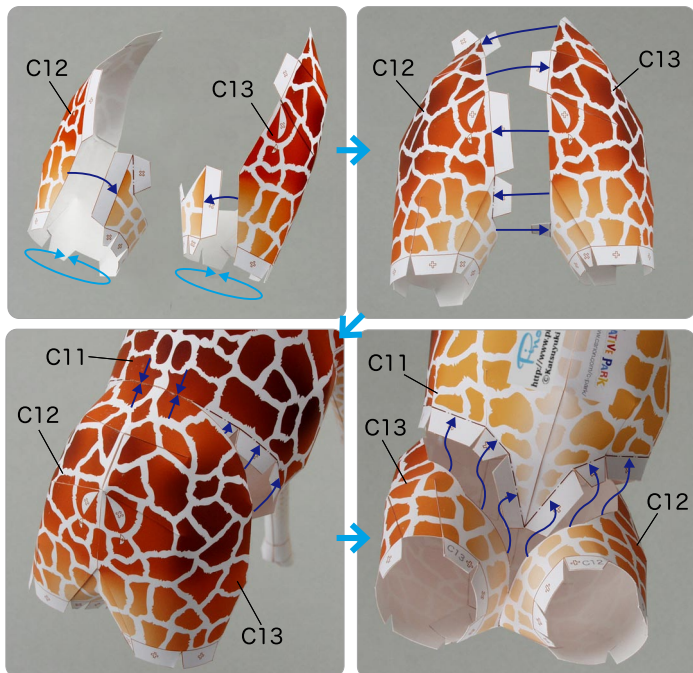
③ Attach the legs to the shoulders.



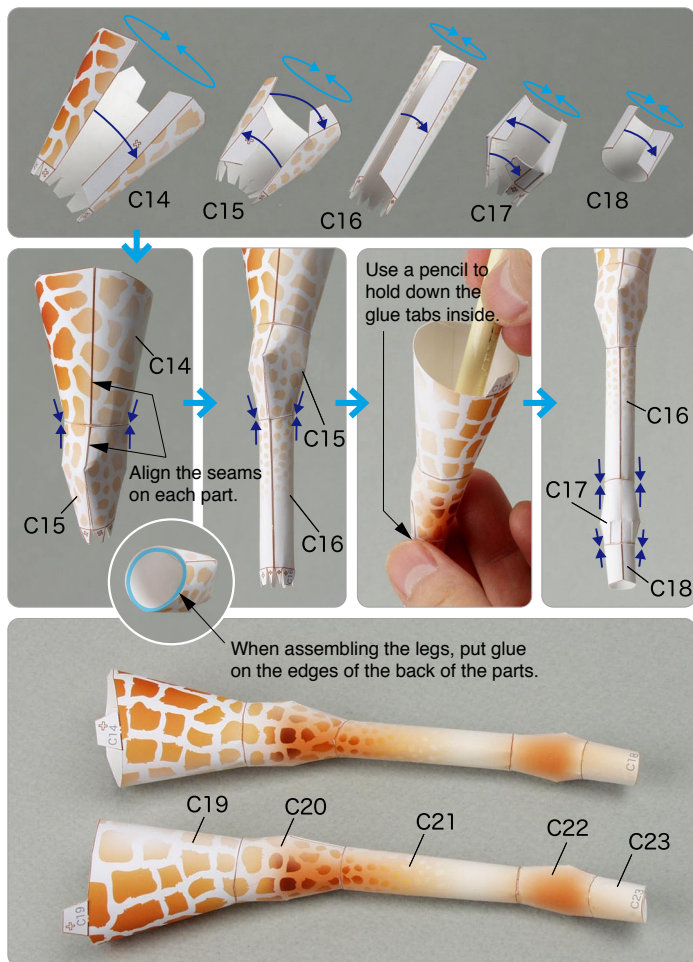
④ Assemble c11, and attach it to the shoulder.



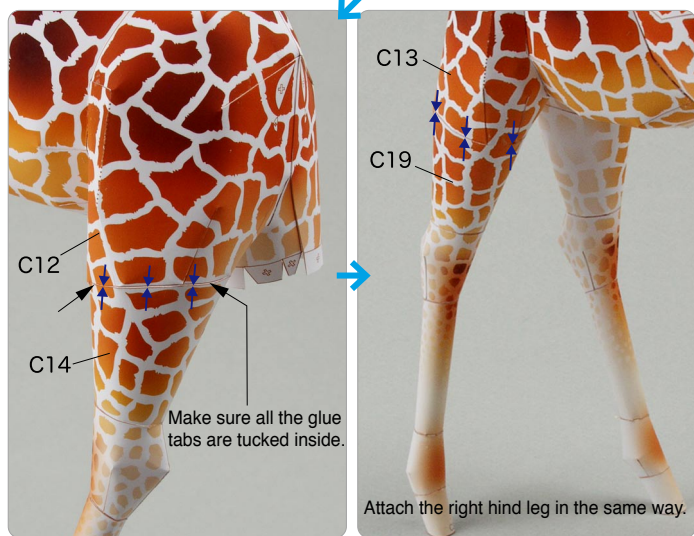
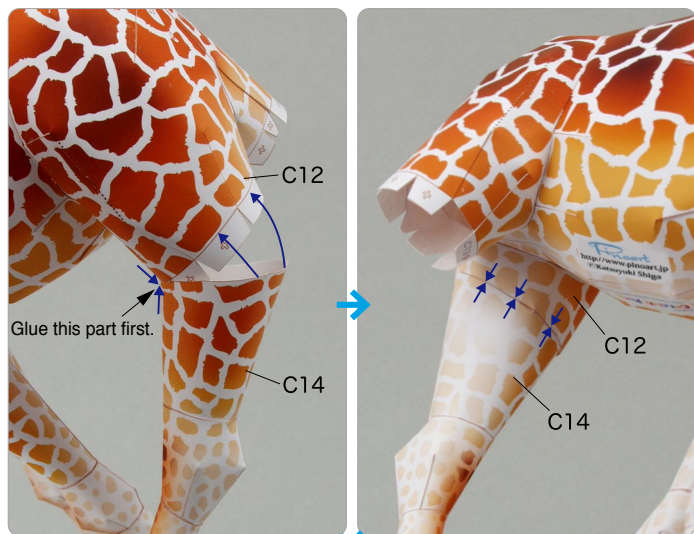
⑤ Assemble C12 and C13, and attach it to the C11.



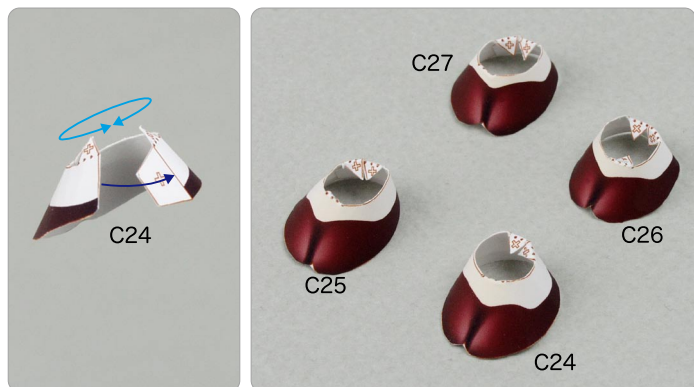
⑥ Assemble parts C14 to C18. Assemble parts C19 to C23 in the same way.



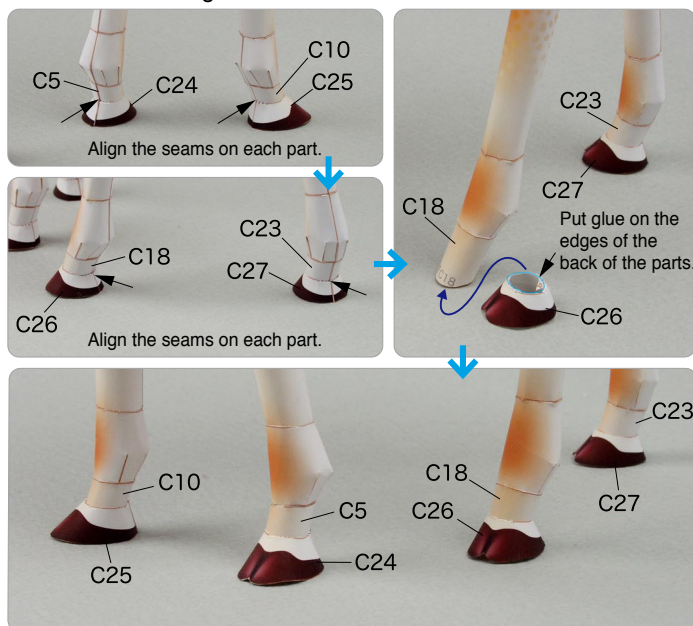
⑦ Attach the legs to the body.



⑧ Assemble C24 , C25 , C26 and C27.



⑨ Without adding glue, fit the hooves to the legs so they stand on the ground. Then glue the hooves, balancing the body to ensure it is straight.



⑩ Assemble C28 and glue them to the body. Your giraffe is now complete.

